

CAVI METALLICI

Dimensioni:

Lunghezza cavo standard: 250 mm

Diametri disponibili:

Ø 1,5 mm - Ø 2,5 mm - Ø 3,5 mm

Size:

Standard cable length: 250 mm

Available diameter:

Ø 1,5 mm - Ø 2,5 mm - Ø 3,5 mm



COLORI DISPONIBILI

AVAILABLE COLOURS



PERSONALIZZAZIONE

CUSTOMIZATION

incisione laser

laser engraving



E ALTRI..

AND OTHER..

Il cavo metallico è un sigillo ad alta sicurezza, è composto interamente in materiale metallico.

Per togliere il sigillo è necessaria una **tronchese** in quanto il cavo è composto da diversi mazzetti di acciaio molto resistenti.

Vengono utilizzati su chiusure di container, camion, cisterne o chiusure che necessitano di non essere aperte.

The metal cable is a high security seal, it is made entirely of metal material.

To remove the seal you need a **wire cutter** because the cable is made up of several very resistant steel bundles.

They are used on closures of containers, trucks, tanks or closures that need not to be opened.

APPLICAZIONE

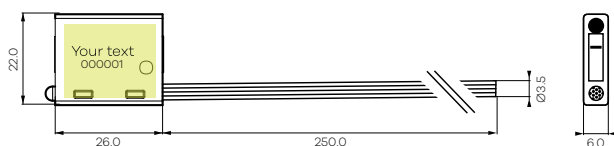
APPLICATION



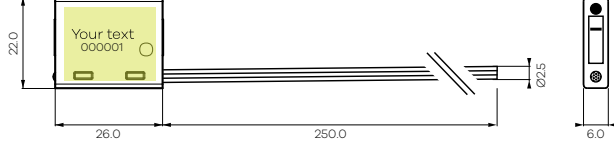
SCHEMA TECNICA

DATA SHEET

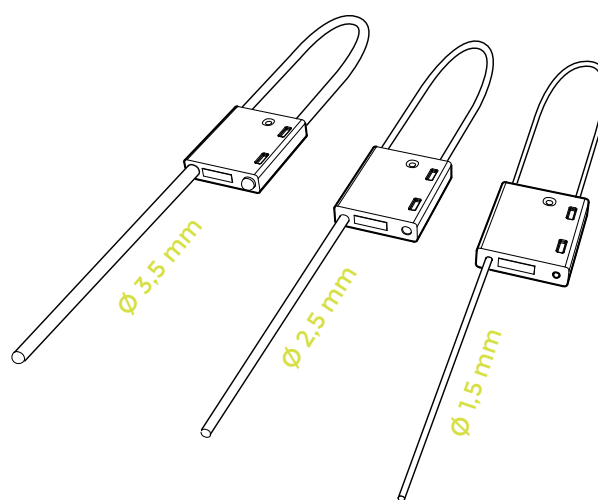
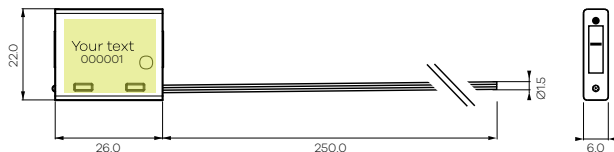
Ø 3,5 mm



Ø 2,5 mm



Ø 1,5 mm



Scala 1:2

■ Area di stampa/Printing area

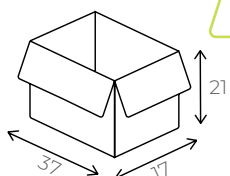
IMBALLAGGIO

PACKAGING

Scatola Cavo Ø 1,5 mm

Pack cable Ø 1,5 mm
1000 pz x pack

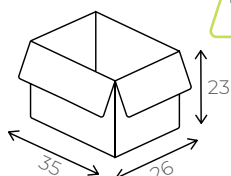
13,4 kg



Scatola Cavo Ø 2,5 mm

Pack cable Ø 2,5 mm
1000 pz x pack

17,6 kg



Scatola Cavo Ø 3,5 mm

Pack cable Ø 3,5 mm
600 pz x pack

14,9 kg

